



OBEROI
INTERNATIONAL
SCHOOL

Welcome to the Middle School.....

- Section 1-Learning,Assessment & Reporting
- Section 2-Checkpoint Examinations
- Section 3-IGCSE Examinations



Whose Child is this?

"Whose child is this?" I asked one day
Seeing a little one out at play
"Mine", said the parent with a tender smile
"Mine to keep a little while
To bathe his hands and comb his hair
To tell him what he is to wear
To prepare him that he may always be good
And each day do the things he should"

"Whose child is this?" I asked again
As the door opened and someone came in
"Mine", said the teacher with the same tender smile
"Mine, to keep just for a little while
To teach him how to be gentle and kind
To train and direct his dear little mind
To help him live by every rule
And get the best he can from school"

"Whose child is this?" I ask once more
Just as the little one entered the door
"Ours" said the parent and the teacher as they smiled
And each took the hand of the little child
"Ours to love and train together
Ours this blessed task forever."



OBEROI
INTERNATIONAL
SCHOOL

A Collaborative Effort.....

Students



Parents

Teachers

School



OBEROI
INTERNATIONAL
SCHOOL

LEARNING, ASSESSMENT & REPORTING



OBEROI
INTERNATIONAL
SCHOOL

What do we Learn?

- Languages- English, Hindi, French & Spanish
- Mathematics
- Science
- Humanities
- Music
- P.E
- ICT
- PSHE
- CAS



OBEROI
INTERNATIONAL
SCHOOL

How do we Learn?

- Presentations
- Role Plays
- Quizzes
- Games
- Projects
- Investigations
- Visits



OBEROI
INTERNATIONAL
SCHOOL

WHY DO WE NEED ASSESSMENTS?

“Assessment is the feedback loop of education. As the system of thermostat, furnace and radiators can heat a house, so a similar assessment system of planning, instruction, and evaluation can help the faculty develop and provide effective instructional programs.”



Formative Assessments

Formative assessment is an integral part of the learning experience and provides students with an opportunity to analyze their learning and to understand what needs work or improvement. **Skills** and **knowledge** are taught through formative tasks.

Formative assessment is continuous and is done throughout the year.



OBEROI
INTERNATIONAL
SCHOOL

Summative Assessment

A summative task is one that is set to judge students' achievement in relation to the objectives of the course.

Summative assessment, in the form of exams, will be conducted twice in a year, in the months of November and May.



OBEROI
INTERNATIONAL
SCHOOL

ASSESSMENT TASKS

- Projects
- Exhibitions
- Oral Presentations
- Performances
- Demonstrations
- Written Papers



Assessment Criteria at OIS

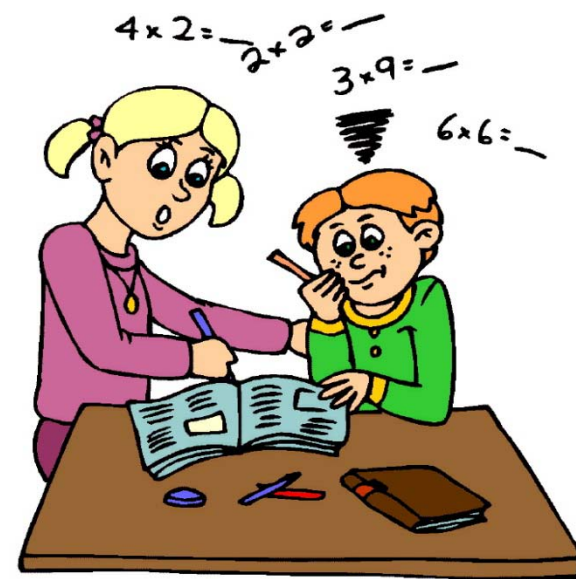
- Assessment in the middle school is to be *criteria based*, which means that teachers measure student attainment against specified subject criteria rather than against other individuals in the class.
- For each criterion there is a range of grades awarded. Each criterion has a descriptor that explains as clearly as possible what each student has been able to achieve in a particular task/assessment.



Examples of Criteria of Assessment

In Mathematics, we generally have four criteria of assessment-

- A. Knowledge & Understanding
- B. Application & Reasoning
- C. Communication in Mathematics
- D. Reflection





Some more examples....

A. Comprehension

B. Communication-verbal &
written

köszönöm ! תודה dĕkuji

mahalo 고맙습니다

C. Reflection

thank you

D. Creativity

merci 谢谢 *danke*

E. Listening

Ευχαριστώ شكرا

どうもありがとう *gracias*



Are the Criteria same for every subject?

In Science, the criteria of assessment could be:

A. Knowledge & Understanding

B. Scientific Enquiry

C. Processing Data

D. Reflection

E. Communication

F. Practical work





OBEROI
INTERNATIONAL
SCHOOL

Final Grade.....

The exam grade will take both formative & summative assessments into account as follows :

Formative Assessment (includes the written tests, projects & investigations etc.)-60%

Term Exam- 40%.

The students will also be continually assessed on Presentation of Work & Time Management(Respecting deadlines)



OBEROI
INTERNATIONAL
SCHOOL

Reporting

The parents will receive four reports during the year-

1. September- Progress Report(based on continuous assessment, only comments, no grades)
2. November-Progress Report(continuous assessment, will carry grades)
3. February-Term Report(continuous & exam based, single grade)
4. May- End of Year Report(continuous & exam based, single grade)



OBEROI
INTERNATIONAL
SCHOOL

CHECKPOINT EXAMINATIONS



OBEROI
INTERNATIONAL
SCHOOL

Checkpoint.....End of Grade 8

- Cambridge Checkpoint tests are available in English, Mathematics and Science.
- Checkpoint is not an exam with a certificate, although a Statement of Achievement is produced.
- Provide teachers with detailed information about the strengths and weaknesses of their pupils in order to focus their teaching



OBEROI
INTERNATIONAL
SCHOOL

What are Checkpoint Tests Like?

- There are two papers in each subject, each approximately one hour in length.



OBEROI
INTERNATIONAL
SCHOOL

IGCSE



OBEROI
INTERNATIONAL
SCHOOL

IGCSE PROGRAM AT OIS

- At school, students are encouraged to study eight subjects at Cambridge IGCSE level, at the same time.
- In order to follow a broad and balanced curriculum, the students take the core subjects- **English and Maths** and then a combination of courses of their choice.
- In most subjects there is a choice between core and extended curricula, making Cambridge IGCSE suitable for a wide range of abilities. Students can enter for the level that is most appropriate for them and this need not be the same across all subjects



OBEROI
INTERNATIONAL
SCHOOL

Subjects on Offer

At present, we are offering the following subjects to our students-

1. Languages- English, Hindi & French
2. Mathematics-Core & Extended
3. Sciences-Discrete & Combined
4. History
5. Business Studies
6. Economics
7. Visual Art



OBEROI
INTERNATIONAL
SCHOOL

Before you choose your IGCSE Subjects.....

- Interests
- Academic strengths
- Career direction
- Education/employment trends



OBEROI
INTERNATIONAL
SCHOOL

SKILLS DEVELOPED

- Recall of knowledge
- Oral skills
- Problem solving
- Initiative
- Team work
- Investigative skills



OBEROI
INTERNATIONAL
SCHOOL

Examinations

Examinations are conducted in the month of May/June and the results declared in the month of August.



OBEROI
INTERNATIONAL
SCHOOL

Grades Available

- A* - 90 and above
- A – 80 to 89
- B – 70 to 79
- C – 60 TO 69
- D – 50 TO 59
- E – 40 TO 49
- F – 30 TO 39
- G – 20 to 29
- U -



OBEROI
INTERNATIONAL
SCHOOL

Presentation by: **Ms. Dipika Rao**

IGCSE Coordinator, OIS

In Collaboration with: **Mr. Alexander Simester**

Dean of Academics, OIS

And

Mr. Andreas Swoboda,

Head of School, OIS